

MARCH 2026

GATEWAY

RESCUE MISSION



THRIFT STORE DONATION DRIVE!!
AND MEET OUR STORE CREW

OUR MISSION *To offer life changing hope through the Gospel of Jesus Christ to men, women, and children through programs to deliver food, shelter, counseling and discipleship*



FROM THE DIRECTOR

"Some want to live within the sound of church or chapel bell. I want to run a rescue shop within a yard of hell."

- C.T. Studd



REX BAKER

With spring at hand in 2026, I'd like to suggest a win-win proposal to you as a supporter of Gateway Rescue Mission. Many of you may do some spring cleaning, which means clearing out household stuff you no longer need and are wondering what to do with it. Your "stuff" can help support our work with the homeless at Gateway Rescue Mission in the following way.

Gateway operates a thrift store in Pearl. We sell donated items, with all proceeds going to support our ministry. I ask you to do some spring cleaning and donate any usable household items you no longer use to Gateway Rescue Mission.

We do not accept government funding at Gateway for three reasons. First, we do not want to compromise our rights to proclaim a spiritual message of hope in Christ. We also don't want to deal with the bureaucratic red tape that comes with restricted government funds. Third, and this is possibly the least understood reason, there is considerably more funding available in the private sector than in the government sector.

At Gateway Rescue Mission, we specialize in all things hand-me-down. We deal with people who have been handed down the line until they arrive at the rescue mission. So, it fits our model to repurpose hand-me-down household items to support feeding and sheltering the homeless, providing programs for people seeking life change, and proclaiming the Gospel message in word and deed.

Our thrift store has traditionally provided about 30 percent of our annual operating budget. That means your donation plays an important part in supporting our work. Your donation helps buy food, pay utility bills, cover insurance costs, fuel vehicles, make payroll,

wash linens and dishes, and cover all the incidentals of operating a ministry.

What should you donate? Items that pay the bills are usable furniture in decent condition and working household appliances. We can also sell donated clothing. Furniture is our single best-selling category. It is the number one thing that customers ask for when shopping in our store.

Now, let's have a more difficult conversation. You would be shocked at how much Gateway Rescue Mission has to pay annually to throw away junk donated to our store that we can't sell. If an appliance is broken, we do not have the capacity to fix it. If the cat has shredded the cloth on the furniture or the dog has peed on it, we can't sell it. Please understand that we want to spend money to buy food rather than paying the waste company to haul off garbage.

Finally, let me answer an often-asked question. Yes, we do pickup donations that are too large for you to transport, such as couches or refrigerators. We will share our pickup and donation hours on the next page of this newsletter.

Many people in the world today see bad things going on and want to do something good that has immediate, local impact. Donating to the Gateway Rescue Mission thrift store does just that. The money generated from selling your donated items goes directly to help us fight the scourge of addiction, rescue people from homelessness, and feed hungry people. Please help us this spring by donating to our thrift store.

Blessings,

A handwritten signature in black ink that reads "Rex M. Baker". The signature is written in a cursive style and is positioned above a white rectangular box.

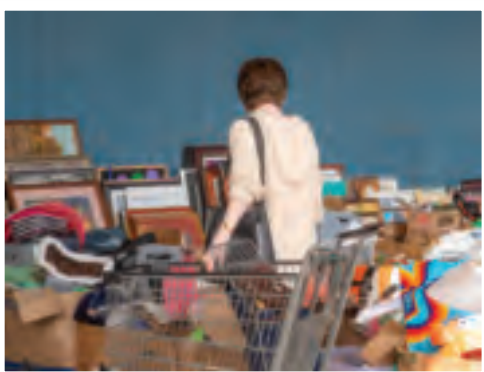
Rex Baker
Executive Director
Gateway Rescue Mission

VISIT GATEWAYMISSION.ORG
FOR MORE INFORMATION ON HOW
YOU CAN HELP SOMEONE TODAY



Meet our Thrift Store crew! These folks keep things humming at our thrift store in Pearl. Here are the facts for anyone wishing to donate to our store. (or shop in our store.)

- Location: 2850 Highway 80 East in Pearl, Mississippi.
- Open: Tuesday-Saturday 9:00 a.m.-5:00 p.m.
- (Our store is closed on Monday.)
- Our store is open 9:00 a.m.-4:00 p.m. to receive donations, Tuesday-Saturday.
- **To schedule a pickup, call our store dispatch at 601-932-1668.**
- Donation pickup protocol: Please be prepared to send photos of the items you wish to have picked up.



We can accept usable furniture in decent shape, functional household or yard appliances, clothing, and household items.

Items we cannot accept:

- Firearms or live ammunition.
- Damaged furniture or furniture that is in bad shape.
- Appliances, computers, or electronics that do not work. We do not have the capacity to repair broken appliances or electronics.
- *Note: If you know down deep inside it should be thrown away, please do not donate it.*

GATEWAY BOARD OF DIRECTORS

Robert Saums
PRESIDENT

Jackie Meck
VICE PRESIDENT

Ralph Jackson
SECRETARY

Allen Holiman
TREASURER

Chris Boone

Arthur Bridges

Donna Bruce

Glen Bush

Lee Campbell

Danny Cawthon

Lou Ann Flatgard

Tim Mahaffey

Ford Mosby

Vernon Perry



328 S. Gallatin Street
P.O. Box 3763
Jackson, MS 39207-3763

Phone: 601.353.5864
Fax: 601.353.9468

Website:
www.gatewaymission.org

Meanwhile, nobody at Gateway Rescue Mission goes hungry. Our kitchen continues to prepare and serve more than 7,000 meals each month. We serve three meals a day, seven days a week. Homeless men receive shelter each night and our New Life Program provides a 6-month residential program for men seeking a biblical approach to life change.

Travis is also shown here handing out a hygiene bag to a homeless man living out of his vehicle. Gateway Rescue Mission is on the frontlines of rescuing people from the streets.

Thank you for supporting God's work at Gateway Rescue Mission!



CURRENT NEEDS

- **Skin lotion for hygiene bags.**
- **Shaving supplies;** razors, shaving cream.
- **Toothpaste and toothbrushes.**
- **Fingernail and toenail clippers.**
- **Combs and hairbrushes.**
- **Soap,** including small bottles of hand soap.
- **Small bottles of hand sanitizer.** (these work well to pass out to our homeless guests and at the homeless encampments.)

FOLLOW US ON SOCIAL MEDIA



Twitter: @gatewaymission • Facebook: Gateway Rescue Mission • Instagram: gatewaymission

For your convenience you may now donate online at gatewaymission.org/donate

